

L-SWITCH™

6-PORT/2-POSITION BIDIRECTIONAL INJECTION

P/N LSW001

The L-Switch™ is a bidirectional 6-port / 2 position valve for injection or switching different fluids. Its configuration make it ideal for recirculation in cell culture.



BENEFITS



Compact
Save bench space



Ease of use
Operate within a minute



Automation
OxyGEN to write protocols



No dead volume
Get accurate results

FEATURES

- Sample loops : 5 µL to 100 µL
- Low internal volume: 660nL
- Port-to-port switching: 100ms
- Up to 7 bar (100 psi)
- Wetted material: Peek
- External flangeless fittings

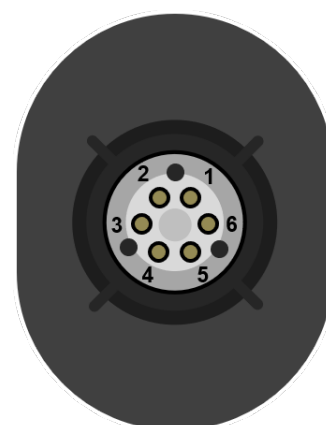
SPECIFICATIONS

Performance	
Maximum Pressure	7 bar (100 psi)
Switching time	100 ms
Hardware specifications	
Internal diameter	0.3 mm
Dead volume	None
Internal volume	660 nL
Wetted Materials	PEEK
Fittings	Flangeless (1/16" OD)
Weight & Dimensions	
Dimensions	7x9x15 cm
Weight	475 g
Electrical Specifications	
Port communication	RJ45
Power supply	24 VDC \pm 5% at 1 Amp max
Software compatibility	OxyGEN

NOTE: Shipping, storing or operating this valve at 0°C or below may result in serious damage to the device. Such conditions must be strictly avoided to ensure proper functionality and durability of the valve.

TECHNOLOGY

The L-SWITCH™ is a 6-port / 2-position injection valve: Peripheral ports (numbered from 1 to 6) can alternatively be connected the right or the left neighbor.



The L-SWITCH™ is actuated by a motor that drives a rotor – where the fluidic path is engraved – against a stator – hosting the fluidic ports.

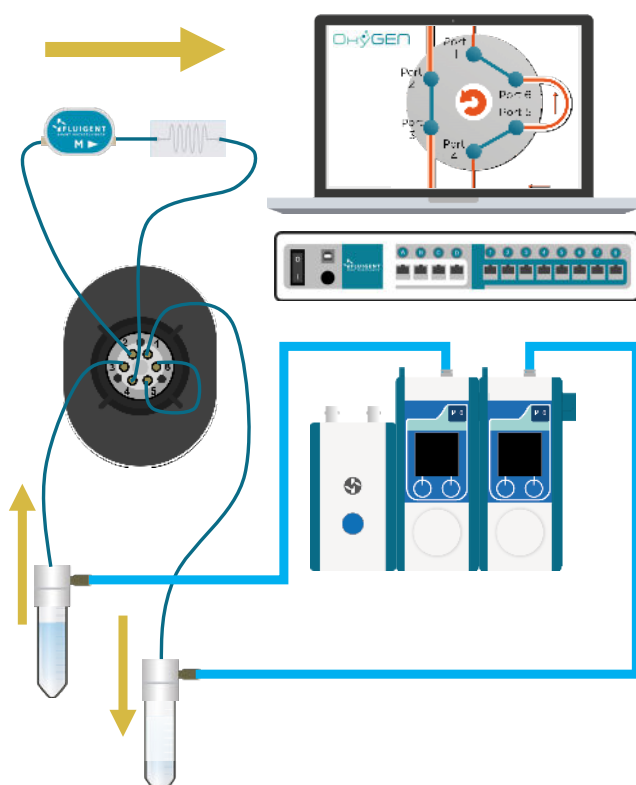


APPLICATION

FLUID RECIRCULATION

The L-SWITCH™ can be used as a useful cell culture tool: a small volume of buffer can be recirculated within a closed loop into the chip for several hours or days. Combined with the LineUp™ pressure regulation it can achieve a highly stable flow with a positive impact on the shear stress.

POSITION 1



POSITION 2

